

Non-Magnetic Access Flooring



Metal access floor panels found in MRI magnet rooms are no longer allowed to be used due to new cable routing requirements that some MRI vendors have implemented.

Fibergrate Composite Structures' covered Micro-Mesh® grating panels and non-magnetic pedestals should be the first choice for customers or architects requiring MRI cable routing via flush or surface mounted access flooring. Fibergrate offers a completely non-magnetic system.

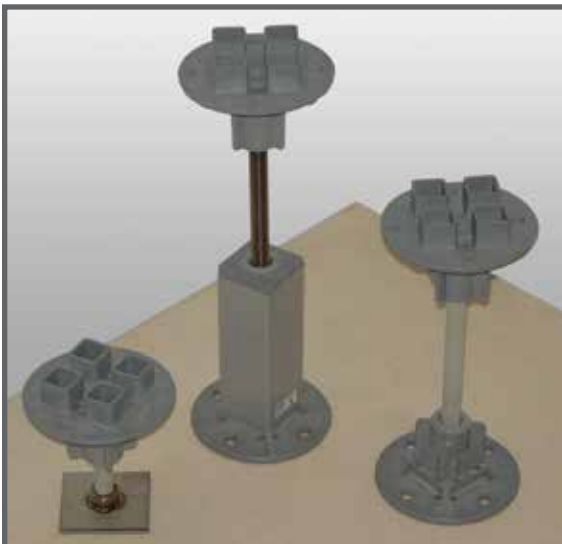
Fibergrate has customized our standard Micro-Mesh® panels and pedestal systems in order to provide a solid top Micro-Mesh panel covered with a high pressure floor laminate and non-magnetic grating pedestals to more completely meet the needs of this new and demanding application. Pedestals are manufactured using Stainless Steel 316 nuts in the composite head and fiberglass reinforced plastic (FRP) rod for adjustability.

Fibergrate Composite Structures is the originator of molded fiberglass reinforced plastics (FRP) grating. With nearly 50 year of experience, Fibergrate continues to lead the industry in innovative products and has the ability to provide customized solutions to address unique issues for our customers.

Surface Resistance

When tested according to the procedure outlined in NFPA 99, the high pressure floor laminate used to cover the Micro-Mesh grating panel has a maximum resistance of 20,000 megaohms measured between the laminate surface and an applicable ground reference. (Typical Values: 11,000-12,000 Megaohms)

Flooring System Pictures



**Pedestals as short as 3.5" are available on request. Contact Fibergrate for details.*



Fibergrate's Quad Head pedestals can be located anywhere within the Micro-Mesh® panel or to join two or four panels.

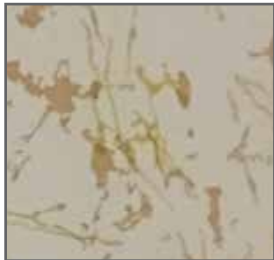
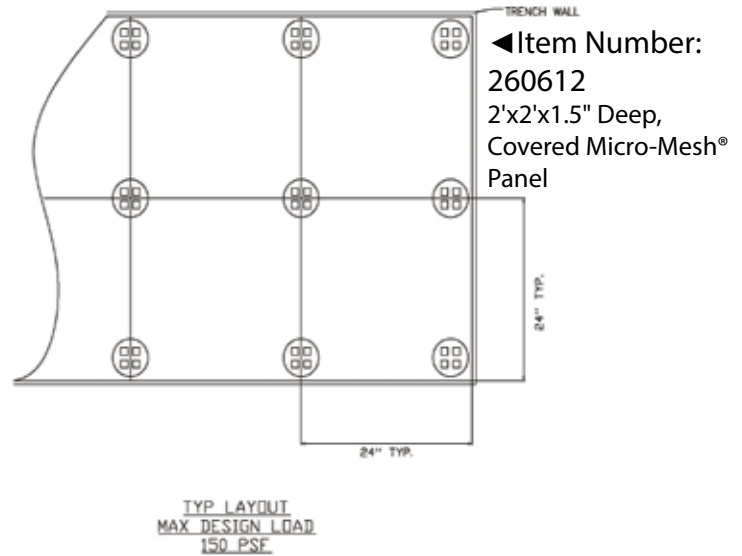
Non-Magnetic Access Flooring System

Details

"A" Dim Adjustment Range

Item Number	Base	Min	Max
569605	SS Base	5.0*	6.5
569706	5" Std Base	6.5	9.25
569708	5" Std Base	8.5	11.5
569810	5" Ext Base	10.5	13.5
569812	5" Ext Base	12.5	15.5
569814	5" Ext Base	14.5	17.5
569816	5" Ext Base	16.5	19.5
569818	5" Ext Base	18.5	21.5
569820	5" Ext Base	20.5	23.5
569822	5" Ext Base	22.5	25.5
260612	Micro-Mesh® 2'x2'x1.5" Deep, No Grit, Dk Gray, Covered with Beige Concord Papercraft High Pressure Laminate Designed for Raised Floor Panels		

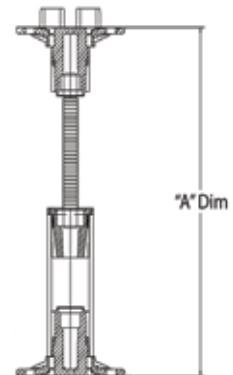
Pedestal Layout



Beige Concord Papercraft High Pressure Laminate

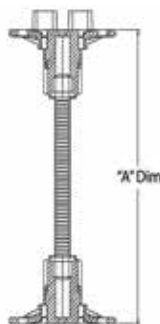
Please Note: Color may vary slightly from actual product due to photography and printing processes.

5" Extended Base Model



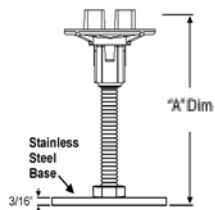
Item Numbers:
 569810, 569812, 569814,
 569816, 569818, 569820,
 569822

5" Standard Base Model



Item Numbers:
 569706, 569708

Flat Base Model



Item Number:
 569605



Phone: 972-250-1633
 Fax: 972-250-1530



www.fibergrate.com



info@fibergrate.com

Fibergrate Composite Structures Inc. believes the information contained here to be true and accurate. Fibergrate makes no warranty, expressed or implied based on this literature and assumes no responsibility for consequential or incidental damages in the use of these products and systems described, including any warranty of merchantability or fitness. Information contained here is for evaluation only.
 ©Fibergrate Inc. 2015-11/15-NonMagneticAccessFlooringSystem.PDF

